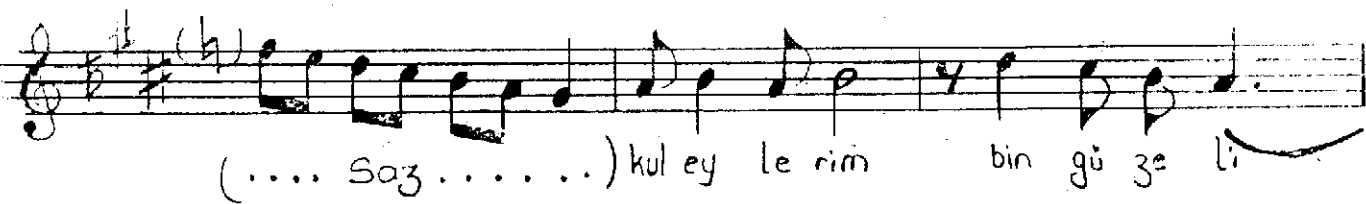
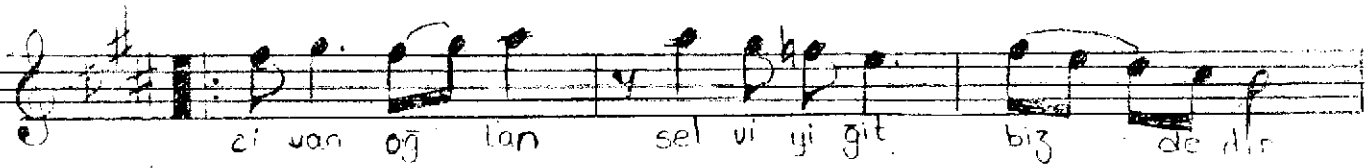
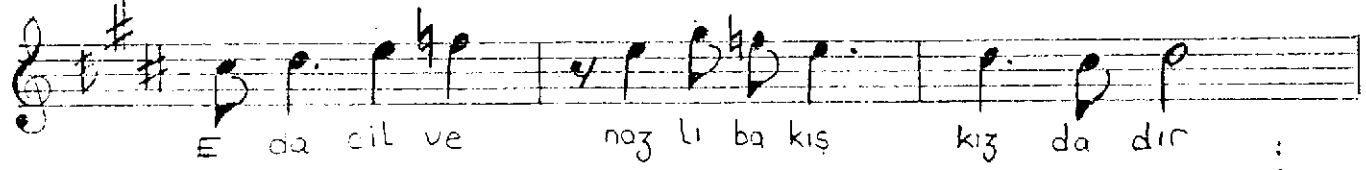
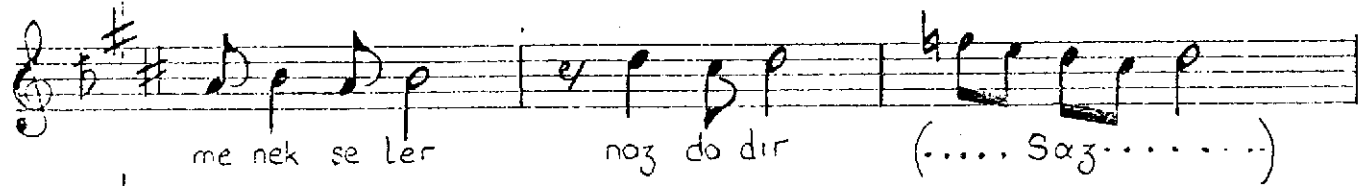
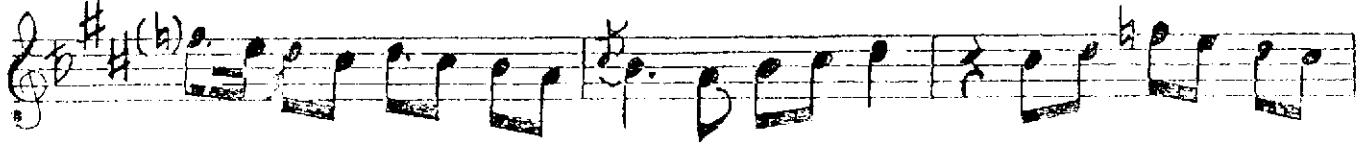


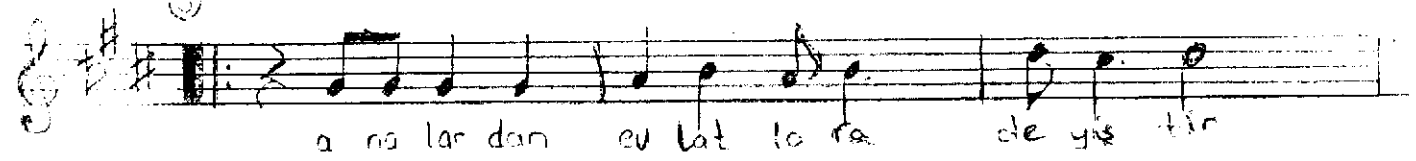
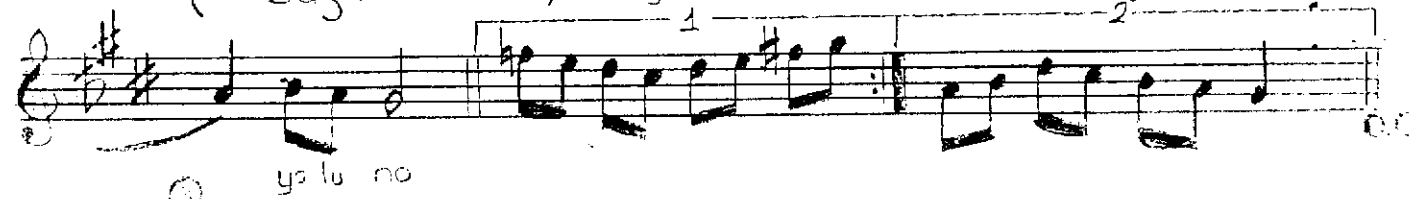
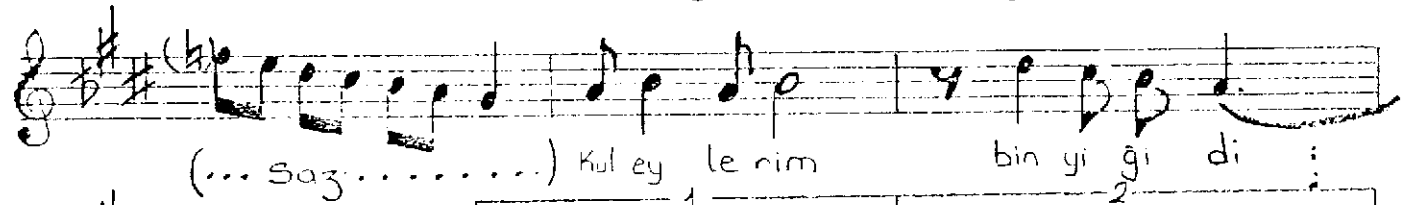
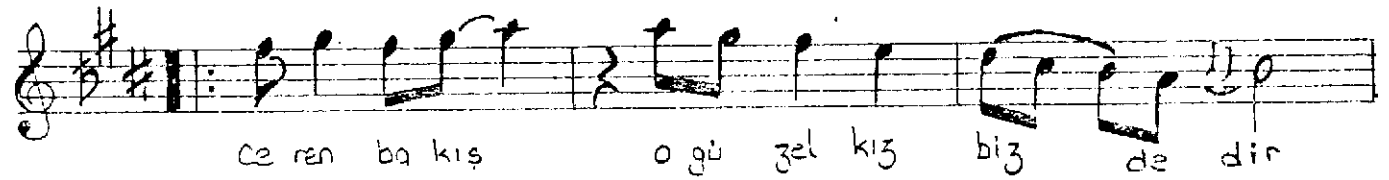
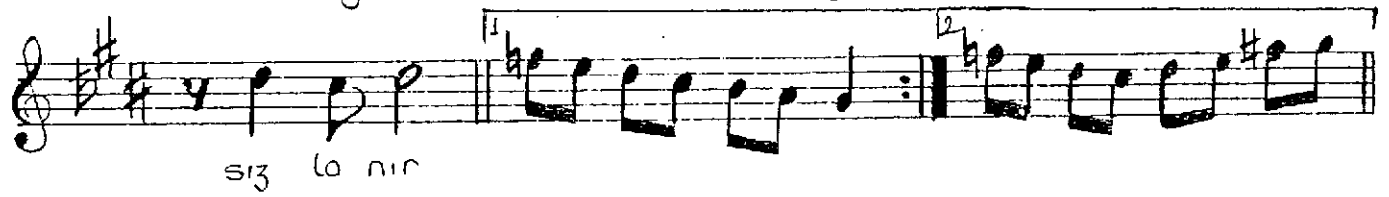
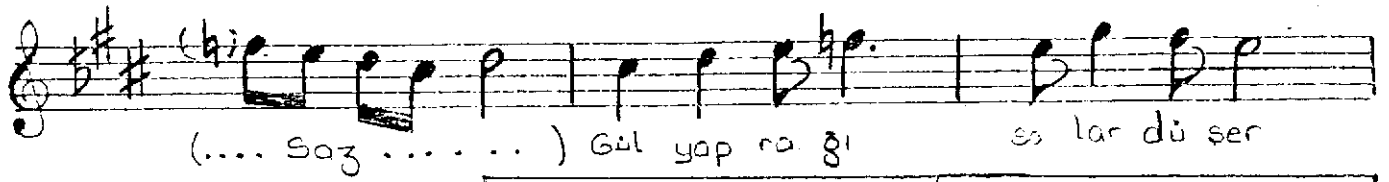
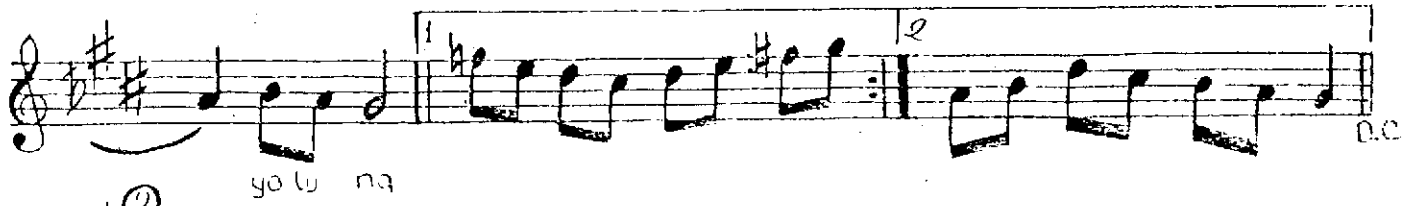
NİKRİZ SARKI

(Lâle sümbül menekseler nazdadır)

Usûlü : Sofyan

Mûzik : İsmail DEMİRKIRAN
SÖZ : Nâdide BULUÇ





bir dös tür

ana lı gın yo lu her dem se vinç tir

(... Saz-...) kul o lur mu ev lat a na

yo lu na

SON NİŞE ASKIN

LALE SÜMBÜL MENEKŞELER NAZDADIR
 EDA CİLVE NAZLI BAKIŞ KIZDADIR
 CİVAN OĞLAN SELVİ YÜİT BİZDEDİR
 KUL EYLERİM BİN GÜZELİ YOLUNA

GÜLE BÜLBÜL KONAR GÖÇER NAZLANIR
 GÜL YAPRAĞI SOLAR DÜŞER SIZLANIR
 CEREN BAKIŞ O GÜZEL KIZ BİZDEDİR
 KUL EYLERİM BİN YİĞİDİ YOLUNA

ANALARDAN EVLATLARA DEYİŞTİR
 BU NE TUTKU BU NE ASIL BİR DÜŞTÜR
 ANACIĞIN YOLU HER DEM SEVİNÇTİR
 KUL OLURMU EVLAT ANA YOLUNA